

About Samsung Electronics Co., Ltd.

Samsung Electronics Co., Ltd. inspires the world and shapes the future with transformative ideas and technologies. The company is redefining the worlds of TVs, smartphones, wearable devices, tablets, digital appliances, medical equipment, network systems, and semiconductor and LED solutions. For the latest news, please visit the Samsung Newsroom at news.samsung.com.

Display Solutions

For more information about Samsung Display Solutions, visit www.samsung.com/business

Copyright © 2024 Samsung Electronics Co., Ltd. All rights reserved. Samsung is a registered trademark of Samsung Electronics Co., Ltd. Specifications and designs are subject to change without notice. Non-metric weights and measurements are approximate. All data were deemed correct at time of creation. Samsung is not liable for errors or omissions. All brand, product, service names and logos are trademarks and/or registered trademarks of their respective owners and are hereby recognized and acknowledged.

Samsung Electronics Co., Ltd.
129, Samsung-ro, Yeongtong-gu, Suwon-si, Gyeonggi-do, 16677 Republic of Korea

2024-09

The Samsung logo is displayed in a bold, white, sans-serif font in the top right corner of the page. The background of the entire page is a dark, abstract image featuring glowing white geometric lines that form a series of overlapping rectangular frames, creating a sense of depth and perspective. The lines are illuminated from below, casting soft glows on the dark surface.

2024 Samsung Display Solutions

Innovating Displays Beyond Boundaries

Samsung, a global brand

Samsung Electronics is a global leader in technology, opening new possibilities for people and businesses everywhere. Since being established in 1969, Samsung has grown into one of the world's leading technology companies.

Our network now extends across the world and we boldly invest in R&D to fuel our aspirations to create new technologies that inspire the world. Through relentless innovation and discovery, Samsung is continuously striving to create a better world for all.

Interbrand
Best
Global
Brands
2023

1. Apple
2. Microsoft
3. Amazon
4. Google
- 5. Samsung**
6. Toyota
7. Mercedes-Benz
8. Coca-Cola
9. Nike
10. BMW



15
Regional Offices



109
Sales Offices



267K+
Employees



32
Production Sites



258.9
Total Revenue
* Based on FY 2023 consolidated statement (B/W: billion)



40
R&D Centers



76
Countries



7
Design Centers

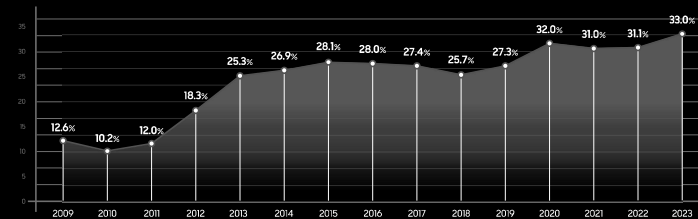
Continuing No. 1 market leadership in display solutions for 15 years

Given its excellence in broad manufacturing expertise and premium picture quality technology, it is no wonder that Samsung has been ranked the No. 1 in the display market for 15 consecutive years.

During those 15 years, Samsung has been constantly providing enterprises with the technology they need to pave an aggressive path forward, ensuring fully optimized display solutions are in place so businesses can focus on what matters most with total peace of mind. With forward-thinking efforts on innovation, Samsung has successfully introduced differentiated signage products that meet various business environment needs including The Wall, the world's first modular display based on microLED technology. From diverse product portfolios to software solutions for management, we are continuously in the process of providing all-inclusive display solutions, which offer a more efficient business experience to customers.

For the past 15 years, Samsung has continuously expanded the boundaries of its technology and will always strive to bring the most innovative display solutions to market with future-oriented market leadership.

Smart Signage M/S (unit)



Source :

* DW-1 : Display Industry research company "Display Search".
* DW-2 : Market research company "Orinda".

Note :

* Consumer TVs and Hospitality TVs used for signage are excluded.



Innovating Displays Beyond Boundaries

Table of Contents

Smart Signage	LED Signage	Hospitality TV	Solution	Monitor
08 Neo QLED 8K Signage	24 The Wall	32 QLED	38 SmartThings Pro	ViewFinity
10 UHD Signage	26 The Wall for Virtual Production	34 Crystal UHD	39 Samsung VXT	44 5K Resolution Monitor
12 Outdoor Signage	27 All-in-One LED	35 Healthcare / Compact	40 LYNK Cloud	46 High Resolution Monitor
13 Window Signage	28 Indoor LED Signage		41 H.Browser / TEP (Transparency Enhancer)	47 Ultra-wide Monitor
14 Video Wall	29 Outdoor LED Signage			
15 Business TV				
16 Samsung Flip / Flip Pro				
17 Interactive Display				
18 Self-Ordering Kiosk				
19 Touch Display				
20 Small Signage				
21 Stretched Signage				



Smart Signage

Share your business story with high-impact visual messaging.
Samsung Smart Signage offers professional-grade image quality and a variety of options that suit any business need. Find your perfect solution regardless of your industry.

- 08 Neo QLED 8K Signage
- 10 UHD Signage
- 12 Outdoor Signage
- 13 Window Signage
- 14 Video Wall
- 15 Business TV
- 16 Samsung Flip / Flip Pro
- 17 Interactive Display
- 18 Self-Ordering Kiosk
- 19 Touch Display
- 20 Small Signage
- 21 Stretched Signage



Neo QLED 8K Signage

QPA-8K

Samsung Neo QLED 8K Signage provides a truly remarkable solution for businesses looking to display impactful content like never before. Superior picture quality supported by Quantum Mini LED and AI-upscaling technology creates true-to-life images, introducing a revolutionary viewing experience.

Highlights

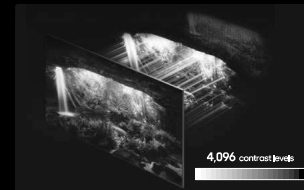
- Real 8K resolution
- Quantum Matrix Technology Pro (Quantum Mini LED)
- Neo Quantum Processor 8K
- 100% color volume with Quantum Dot*
- Quantum HDR 32x
- Infinity One Design / Boundless Design
- Portrait Mode
- Attachable Slim One Connect
- Adaptive Picture Mode
- DICOM Simulation Mode
- Director Mode

* 100% color volume measured in Movie Mode, certified by VDE.

Samsung Display Solutions | Smart Signage

Unrivaled picture quality

Samsung Neo QLED 8K Signage has evolved to provide premium visuals and is now equipped with Quantum Matrix Technology Pro, offering detailed backlight control technology with Mini LED for the most advanced professional 8K display.



Designed for business

Samsung Neo QLED 8K Signage's Infinity One Design naturally complements any business space with a slim and simple bezel design. Its new pivot functionality also allows users to install the display vertically for any business purpose.



Built for professionals

Samsung Neo QLED 8K Signage offers various professional modes for professions that need industry-specific picture standards for creative work and collaboration – Adaptive Picture, DICOM Simulation and Director Mode.



* DICOM – Digital Imaging and Communications in Medicine – is the international standard for medical images and related information.

** DICOM Simulation Mode is for non-diagnostic, reference purpose only.



UHD Signage

QHC / QMC / QBC

Samsung's UHD QHC, QMC, and QBC series feature the slimmest designs in the standalone lineup, adding sophistication to any business environment while optimizing space utilization. These products captivate audiences with breathtaking realism and vibrant color reproduction. Powered by Tizen OS, they offer exceptional performance and unparalleled user experiences, ensuring stable operations and enhanced security tailored to meet all your business requirements. The intuitive Home Screen UX further streamlines usage, making it a breeze to navigate through various functions effortlessly.

Highlights

- Ultra Slim Design (28.5mm)*
- Even bezel
- Dynamic Crystal color
- Non-Glare**
- SMARTVIEW***
- Smart Calibration
- Home UI
- Samsung VXT****
- ENERGY STAR / EPEAT

* For QMNC and QMNC, the thickness of the products is 48.1mm, which are the thinnest 75-inch display in its class.

** Non-Glare and SMARTVIEW are not supported on QMC Series.

*** Samsung VXT must be purchased separately.

**** Only QMNC and QMNC are classified as Smart Signage.

Samsung Display Solutions | Smart Signage



Ultra-slim design to optimize space

With an unparalleled, ultra-slim thickness of 28.5mm*, QHC / QMC / QBC series is Samsung's slimmest UHD signage display. It is compatible with a Slim Fit Wall Mount*, which allows you to install it neatly and easily in any environment.

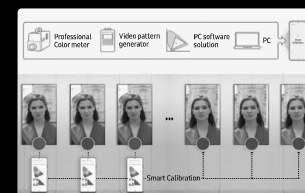
* For QMNC and QMNC, the thickness of the products is 48.1mm, which are the thinnest 75-inch display in its class.

** Slim Fit Wall Mount must be purchased separately.



View lifelike details of color in powerful 4K

Samsung's industry-leading video processing technology enhances every piece of content for clarity and consistency. Intelligent UHD upscaling technology, powered by Samsung's 4K Processor, elevates lower-resolution video to UHD, providing a professional picture quality.



Simplified calibration between screens with mobile app

Guarantee complete brand consistency across every display in every location. Using the Samsung mobile app, Smart Calibration ensures all displays are calibrated correctly, showcasing brand logos and other collateral in the exact colors required.



Outdoor Signage

OHA / OHA-S / OHB / OHB-S

Samsung's Outdoor Signage elevates the outdoor advertising experience with its bold and engaging content delivery, making any business stand out from the crowd.

Highlights

- UL-verified outdoor visibility*
- Auto brightness control
- Polarized sunglass support
- 24/7 operation
- Embedded power box and media player
- IP56 rating**
- Magic Protection Glass (IK10-rated)

* UL verification may vary by model.

** OHB2B model is IP66-rated.



Samsung Display Solutions | Smart Signage

Window Signage

OMA / OMB / OMN-S / OMN-DS

Samsung's Window Signage is designed to be installed at the storefront. It projects clear, bright images that attract and engage audiences, increasing the probability of an in-store visit.

Highlights

- 4K UHD resolution*
- High brightness (3,000~4,000 nit)**
- Auto brightness control
- Polarized sunglass support
- 24/7 operation
- Slim design
- IP5X rating
- Overheating mitigation
- Clean cable management
- Wi-Fi built-in
- Dual-sided screen***

* Resolution may vary by model.

** 4K UHD model is 3,000 / 1,000 nit (Dual-sided).

*** Dual-sided screen is only available on OMN-DS series.



Clear and vivid anytime, anywhere

Samsung Outdoor Signage is UL-verified for outdoor visibility and offers brightness levels greater than 3,500 nit*. Its 24/7 performance delivers crisp and vivid content with a built-in auto-brightness sensor.

* UL Verification may vary by models.

** Images and enclosure are simulated and for illustration purpose only.



Built strong to endure outdoor elements

IP56-rated* protection ensures the displays will withstand physical impact as well as dust and other outdoor elements that could affect the display.

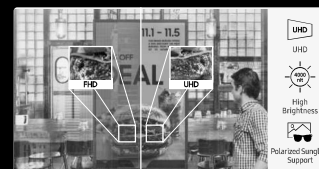
* IP56 (Ingress Protection Rating) - Degrees of protection provided by enclosures IEC 60529.



Advanced technology for screen protection and security

Samsung Outdoor Signage's Advanced Magic Glass technology IK10 rating certifies greater screen durability. This effectively protects the screen to minimize damage from physical impact.

* The IK (European strength test rating) uses a 5kg scale hammer 10 indicates the highest possible protection to measure the degree of resistance against external impact.



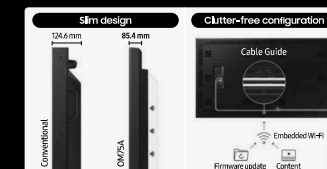
Brilliant presentation for all

Built to optimize promotions in storefront windows, Samsung's Window Signage delivers brilliant picture quality that brings any offer to life. Plus, high brightness and polarized sunglass support eliminate any potential display blindness for an uncompromised customer viewing experience.



Durable performance

With IP5X-validated dust protection and embedded, proprietary functionality that mitigates overheating, Samsung's Window Signage continuously provides robust durability. This ensures optimized operation in a variety of outdoor conditions for consistent performance.



Slim design and clutter-free configuration

Its slim design makes the display a natural extension of the store, as opposed to an addition that ties up valuable space. Cable guide and embedded Wi-Fi provide a clean, organized look.

** 'Conventional' refers to Samsung's OM750-40.



Video Wall

VHC-R, VMC-R, VHC-E, VMC-E, VMB-U

Samsung's Video Wall delivers an impactful and seamless viewing experience with an exceptionally narrow bezel - coming in a variety of bezel widths.

Highlights

- Various bezel widths options
- Wide viewing angle
- Non-glare panel
- 24/7 operation
- Multi-step factory calibration
- Convenient mobile calibration
- 4K UHD resolution by daisy chain
- Easy installation*
- IPSX rating
- Center IR**
- EMC class B**
- ISTA-certified packaging

* Samsung's special wall mount accessories must be purchased separately.
** Center IR support and EMC class B certification varies by video wall model.



Samsung Display Solutions | Smart Signage

Business TV

BED-H

Samsung's Business TV is the ideal display solution for small businesses, allowing users to communicate with customers without outdated physical signs or posters. From menu boards to advertisements, Samsung's Business TV provides flexible functionality suited to a wide range of retail stores and businesses looking to do more with their TV.

Highlights

- PurColor
- Crystal Processor 4K
- 3-side Bezel-Less Design
- Samsung Business TV App
- PlayLock*
- Tizen Zero Touch Config*

* The feature's availability may vary by region.



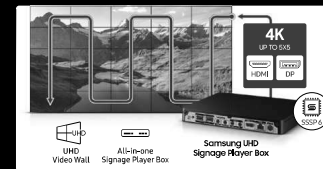
Uninterrupted visual experience

A narrow bezel - 0.88 mm to 3.5 mm bezel-to-bezel options - minimizes the visual distractions across multiple screens. The display's non-glare panels provide better visibility regardless of ambient light, 24/7.



Precise and convenient calibration

Samsung's multi-step factory calibration tunes video walls to uniform brightness and color throughout multiple displays. Users can also easily manage uniformity with intuitive PC and mobile calibration solution.



Efficient and reliable operation

With daisy chain using DP1.2 and HDMI ports, Samsung's video walls can project UHD content across multiple screens up to 5x5 configuration. ISTA-certified packaging is designed to minimize possible damage.



Control content with your personal device

Available on Android or iOS mobile devices, the Samsung Business TV app allows users to remotely manage, schedule and display customized content effortlessly. Additionally, users can easily create eye-catching content using a variety of ready-to-use content templates.

* Images simulated for illustrative purposes. Actual UI may differ and is subject to change without notice.



Smooth device management and configuration

The Tizen Enterprise Platform* enables efficient management of multiple devices, providing all the tools for easy deployment, with integrated service infrastructure and streamlined maintenance.

* The feature's availability may vary by region.



Keep content safe with pin-code system

Lock your TV with a pin-code system*, preventing unauthorized users or outsiders from tampering with the screen. This minimizes the chance of unforeseen accidents, while ensuring that only the content you have selected is played.

* The feature's availability may vary by region.



Samsung Flip | Flip Pro

WMR / WMA

WMB

Samsung Flip and Flip Pro are available in a variety of sizes to suit any space in both corporate and education environments. Smooth pen-to-paper writing experience allow users to develop new ideas without the hassle of any technical difficulties. Regardless of the size of a space, number of people or use case, Flip Pro is an optimal solution for users looking to enhance efficiency and creativity.

Highlights

- Fast & multi-touch
- Pen & brush mode
- 3-in-1 USB-C port*
- AirPlay 2**
- SMARTVIEW**
- Workspace secured by Knox.
- Boxlight MimioConnect***

* 100W only.
** The feature's availability may not be supported depending on variety of customer environment including region.
*** Requires Boxlight registration and subscription to use this service and the service availability varies by region.



Samsung Display Solutions | Smart Signage

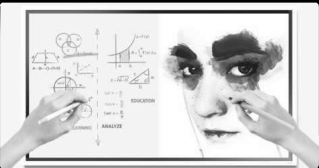
Interactive Display

WAC / WAD

Samsung Interactive Display WAC and WAD series is based on Android OS and provides a familiar and intuitive user experience. You can download and use major educational apps from Google Play. This makes the educational environment more convenient and efficient, improving educators' productivity with various functions and convenient usability.

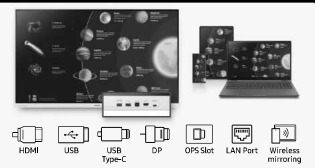
Highlights

- Powered by Android™
- EDLA Certification (WAD series)
- Easy Multitasking
- Powerful Screen Sharing
- Multi-point touch
- 3-in-1 USB-C port
- HDMI Out
- OPS (Open Pluggable Specification)
- Device Management Solution



Intuitive writing & drawing

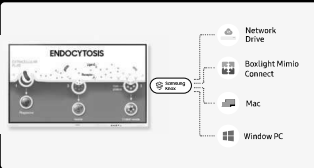
Ideas are brought to life instantly on Samsung Flip series with an intuitive user interface. Its unique pen and brush mode and various writing tools provides a real-world writing experience.



Stay connected from any source

Samsung Flip series provides multiple connectivity options including USB, HDMI, DP and OPS slot*. They also support connection to any network and other devices through LAN port and wireless screen-mirroring.

* OPS Slot is only supported on 75" and 85".



Access whatever you need, from anywhere

With Workspace secured by Knox, Flip series enable users to easily access remote PC, network drive and other third-party applications such as Microsoft 365, Boxlight MimioConnect and video call applications.

* Available apps may vary by region and require an active subscription.



An intuitive UX that fits your needs

The WAC and WAD series offers familiarity to its users. It's compatible with other Android devices and provides a variety of widgets and an easily customizable home screen. These features create more flexibility in building an environment that suits various learning needs.



Effortless access to Google services

With an EDLA certification, the WAD series supports a variety of Google services like Google Play and YouTube. This access to major educational apps like Google Classroom leads to increased efficiency and enhanced communication with students.



Seamless management, efficient operations

The WAC and WAD series provides a device management solution* essential for advanced educational environments. This solution optimizes the remote management of whiteboard settings and applications, guaranteeing operational efficiency and stability.



Self-Ordering Kiosk

KMA / KMC-W

Samsung's Self-Ordering Kiosk is an all-in-one solution that offers contactless ordering and payment capabilities with easy installation options and smart solutions.

Highlights

- Smooth & fast touch
- PC-less solution
- QR / Barcode reader
- Receipt printer
- Compact & modern design
- Remote management
- Secured by Knox
- Windows 10 IoT Enterprise OS (KMC-W)
- Intel® Core™ Processors (KMA-W)



Touch Display

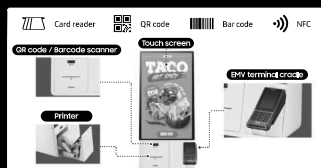
QMB-T

Samsung's Touch Display aligns cutting-edge visuals with captivating touch technology for a more informative, interactive customer experience.

Highlights

- All-in-one touch solution
- 4K UHD resolution*
- Non-glare*
- 24/7 operation*
- IPSK rating
- Center IR
- Easy content and device management

* Specifications may vary by model.

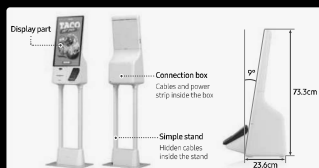


Modular functionality for any type of payment

Samsung Kiosk adopts a modular design which provides a variety of payment options (credit card, barcode, QR code and NFC, along with a built-in printer) which needs no additional peripherals.

* DVM code for a Web flow terminal (K400) which varies by region and country.

** DVM terminal must be purchased separately.



Compact and modern design

Samsung Kiosk blends perfectly into any business environment with a stylish look. It is simply composed of three parts and provides three installation options – countertop, floor stand and wall-mounting* for any of use.

* Wall mount must be purchased separately.



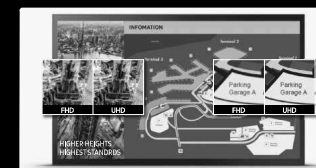
Your choice of operating systems

Choose from two open and secure operating systems based on your preference to ensure business operations run smoothly.



All-in-one touch solution for any environment

Maximize use of touch display with a built-in, high performance Tizen-based media player. The all-in-one design eliminates the need for an external player and the advanced Tizen OS enables a wide variety of apps.



Captivate customers with UHD content

Samsung's interactive displays provide UHD resolution on non-glare glass for incredibly clear content and accurate visual detail without reflection, increasing customer engagement.

* The UHD feature is only supported for 43 inches and 55 inches display.



Built to be reliable

With IP5X rating standard, QMB-T series ensures reliable performance even in dusty environments to protect the display from repeated customer interactions.



Small Signage

QB13R-M / QB13R-TM / QB24C / QB24C-T / QM32C

Samsung's Small Signage enables personalized and more impactful communication through its compact and versatile design.

Highlights

- Non-glare panel*
- 500 nit High brightness*
- 16/7 operation*
- Embedded media player
- Knox security
- Built-in Wi-Fi
- Center IR
- EMC Class B, IP5X
- 10 point multi-touch**

* QB24C / QB24C-T only.
** Touch functionality is only available on QB24C-TM and QM32C series.



Crisp and visible content

Samsung Small Signage supports high brightness for crisp and easy-to-read content. This is enhanced by a non-glare panel which always delivers clear content in any ambient light.

* QB13R-M / QB13R-TM only.



Hold sizable opportunities in small spaces

The compact design allows for efficient space utilization, even in compact locations. A sleek rear design makes the display optimal for wall mounting while the connectivity, content play and device controls are easy to operate.



Fast, effective touch capabilities

Integrated capacitive touch functionality and 10-point-multi-touch* powers an intuitive interface that allows for customer-driven search and action, creating new customer interactions and driving purchase.

* QB13R-TM/QB24C-T only.



Samsung Display Solutions | Smart Signage

Stretched Signage

SH37C

Samsung's Stretched Signage offers a versatile signage solution to meet any need, while delivering impactful content and maximizing space efficiency.

Highlights

- 16:4.5 stretched ratio
- 700 nit brightness
- Non-glare panel
- 24/7 operation
- Embedded media player
- Vertical installation



Maximize space and optimize content

Versatility and cost effectiveness are necessities in digital signage. Samsung's SH37C series, featuring a 16:4.5 wide screen stretched display format, offers the ability to effectively communicate information in small, narrow spaces.



700-nit brightness makes messages easier to see

Deliver vibrant, realistic images through an unparalleled visual experience. Featuring brightness levels of up to 700 nits, these displays deliver clear and rich imagery to viewers.



Communicate even in vertical format

Capture the attention of customers with more versatile, impactful digital signage visuals, which can easily be viewed across displays that are installed in a narrow, vertical space, creating more opportunities to communicate your key messages across environments.

LED Signage

Expand your business vision without limits. Samsung LED Signage effectively captures customer attention with brilliant visuals, even on large-scale displays. Available in a variety of sizes and shapes, these displays allow for unlimited creative possibilities.

- 24 The Wall
- 26 The Wall for Virtual Production
- 27 All-in-One LED
- 28 Indoor LED Signage
- 29 Outdoor LED Signage



The Wall

IWA / IWB / IWC

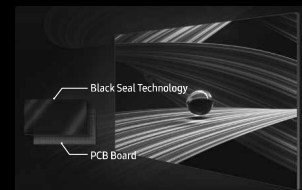
Samsung The Wall is the most exclusive and unique display solution delivering never-before-seen visual experiences. Based on Samsung's rich R&D heritage and accumulated LED expertise, The Wall creates visual innovation with no boundaries, providing the deepest blacks and pristine colors, taking any picture to the next level for a perfect view of reality.

Highlights

- Black Seal technology
- Ultra Chroma technology
- Anti-reflection technology
- 20bit processing
- Linear grayscale
- MICRO AI Processor
- MICRO HDR
- MICRO Motion
- Factory seam adjustment
- Docking connection*
- Endless design*
- Proven safety
- 8K playback
- Multi View

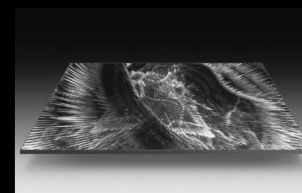
* Some features may vary by models.

Samsung Display Solutions | LED signage



The essence of black

Black Seal technology blankets the screen with a perfect black background. It makes The Wall a uniform, seamless canvas for purer black levels with enhanced depth that delivers unparalleled contrast and immaculate detail.



Superior color purity

With Ultra Chroma technology, The Wall's inherent color qualities, with two times* purer color purity than conventional LEDs, produce vibrant and natural colors for an awe-inspiring visual experience, bringing details to life as if you were really there.

* Figure is based on internal testing standards against Samsung's conventional LED Signage.



Instant AI optimization

Every second of content is instantly analyzed and optimized for perfect picture quality. The powerful MICRO AI Processor delivers superior visuals in any size up to 8K resolution, enhancing contrast and removing noise.



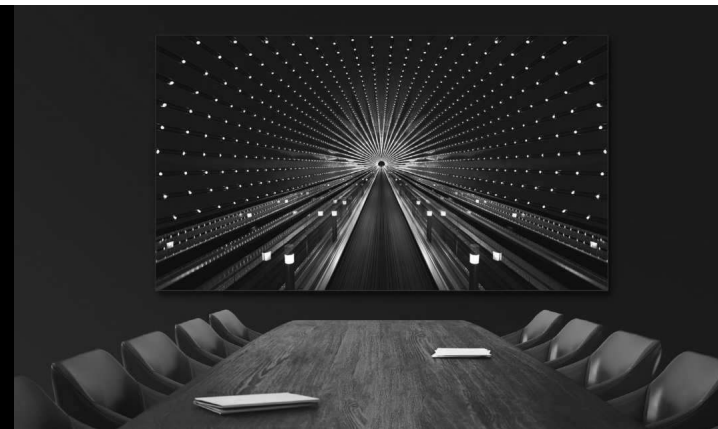
The Wall

for Virtual Production
IVC

Samsung The Wall for Virtual Production transforms the entire workflow of virtual production, supporting an industry top level 12,288 Hz refresh rate as well as genlock and phase offset.

Highlights

- Black Seal technology
- Ultra Chroma technology
- 20bit processing
- Linear grayscale
- 12,288 Hz high refresh rate
- Genlock & Phase offset
- Advanced Installation
 - Max 5800R concave support
 - Hanging / Stacking
- Virtual Production Manager



All-in-One LED

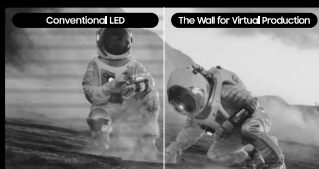
IAB / IAC

Samsung's all-in-one LED display enables a drastically simplified installation. With Samsung's exclusive Quick Build technology, it only takes two hours* to install a giant screen.

Highlights

- Black Seal technology**
- Ultra Chroma technology**
- 20bit processing
- Linear grayscale
- Neural Quantum Processor 4K
- MICRO HDR**
- MICRO Motion**
- Quick Build
- Built-in control box
- All-inclusive components
- Multi-screen connection

* Install time estimate based on internal testing.
** IAB only.



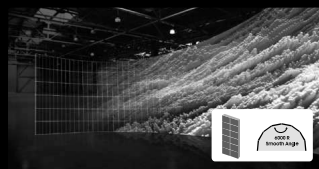
Minimize flickers and artefacts

By supporting an industry top level 12,288 Hz refresh rate, The Wall for Virtual Production minimizes flicker lines and artefacts when shooting the image on display through a camera.



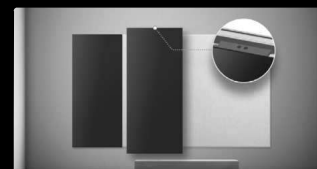
Perfect frame synchronization

The Wall for Virtual Production allows to genlock all the signals of the entire system, ensuring a perfect synchronization. It also offers a phase offset function for further frame corrections.



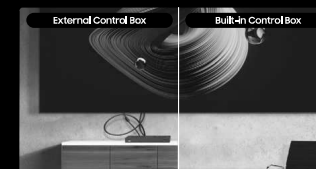
Flawless curved installation

The Wall for Virtual Production improved its cabinet structure to be half-width in 4:9 ratio, allowing better curved installation with perfectly smooth angles.



Quick install. Big impact.

Dock the two background plates and hang just four preset modules, and that's it. With Quick Build structure, it only takes two hours to complete the installation of a giant screen.



Auto configuration setup

Samsung's all-in-one LED display integrates the control box so it's built into the display, eliminating a cumbersome configuration process to get the display up and running faster.



No extra peripherals needed

From the control box and wall brackets to speakers and deco bezels, every extra peripheral needed to begin operation is included in a box.



Indoor LED Signage

IFR / IEA

Samsung's indoor LED signage delivers stunning picture quality and can be custom-fit for the specific space requirements, giving customers an immersive experience.

Highlights

- LED HDR technology
- HDR10+ support
- Multi-link HDR
- Flexible design
 - Ceiling / Inclined / Curved / L-type
- Mobile calibration
- Power redundancy*
- Signal redundancy
- Front service

*IFR only.



Best-in-class LED picture quality

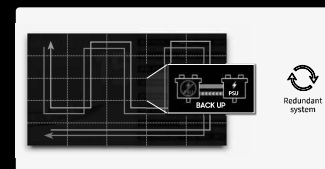
Samsung's Indoor LED Signage delivers brilliant visuals and pin-sharp clarity with LED HDR technology. It enhances content to optimum brightness levels while avoiding glare and ensures an accurate color presentation without requiring special metadata.

*"Conventional" refers to Samsung's previous models.



Flexible design for any location

Advanced design provides flexibility for any indoor retail or other business environment. With support of portrait and landscape orientation - and even curved, L-shaped and ceiling installations - businesses can have ultimate control to create the ideal display for their space.



Operational safeguards to minimize downtime

Samsung's Indoor LED Signage features multiple operational safeguards intended to minimize screen failures including embedded dual power units and forward and reverse signal redundancy.



Samsung Display Solutions | LED Signage

Outdoor LED Signage

XHB

Samsung's Outdoor LED signage is ideal for a wide range of outdoor applications, featuring clear visibility and even more reliability. Proven visuals, built to perform.

Highlights

- 8,000 nit high brightness
- HDR10+ / HLG support
- Proprietary S-box support
- Advanced fan-less heat dissipation technology
- IP66 rating (front / back)
- Slim & light cabinet design
- Full lineup available
 - Module-Fit / Curved / L-type / Fascia



Superior visuals powered by Samsung S-box

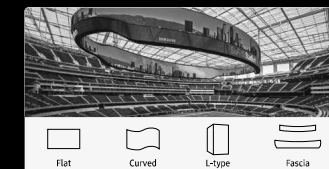
Equipped with Samsung's powerful S-box full of the latest technology, XHB series delivers immersive content to delight spectators in any weather or lighting conditions.



Improved energy efficiency

XHB series runs at just 700 W/m², reducing power consumption up to 25% compared with conventional products. Its improved energy efficiency allows for a more sustainable business operation.

* Figure is based on XHB-S-PB cabinet and against Samsung's conventional outdoor LED Signage.



Full outdoor lineup for any scenario

Thanks to a variety of bespoke cabinet options, including Flat, L-type, Curve, and Fascia, businesses can have ultimate control to create the ideal display for their space.

* Samsung LED Signage installed at SoFi Stadium in Los Angeles, USA.



Hospitality TV

Enhance the guest experience with Samsung Hospitality TVs. Leveraging our expertise in TV technology, these hospitality displays are optimized for hotel environments, offering guests a comfortable and familiar viewing experience while providing hotel managers with efficient control and management.

- 32 QLED
- 34 Crystal UHD
- 35 Healthcare / Compact



QLED

HQ60A

Samsung QLED hospitality display offers a luxury experience with every view. Content comes to life with brilliant Quantum Dot color, 4K resolution and immersive 3D sound to provide guests with the ultimate in-room viewing experience. With powerful Samsung's hospitality solution, seamlessly manage the full guest experience.

Highlights

- 100% Color Volume with Quantum Dot
- Quantum Processor Lite 4K
- HDR10+
- Dual LED
- AirSlim Design
- Object Tracking Sound Lite (OTS Lite)
- Samsung Q-Symphony
- Adaptive Sound Ambient Mode
- HBrowser
- LYNK Cloud*

* LYNK Cloud License must be purchased separately



Samsung Display Solutions | Hospitality TV

Crystal UHD

HAU8000 / HBU8000

Samsung Crystal UHD hospitality display gives your guests the feeling of home, offering clear viewing and convenient access to their favorite content for instant comfort.

Highlights

- Dynamic Crystal Color
- Object Tracking Sound Lite (OTS Lite)
- Samsung Q-Symphony
- Ambient Mode
- AirSlim Design
- Slim Fit Wall-mount
- LYNK Cloud*
- HBrowser**
- Netflix***
- TEP API***

* LYNK Cloud License must be purchased separately

** Available only

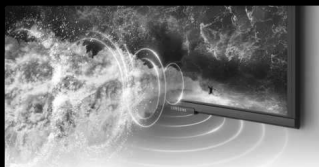
*** HBU8000 only



A billion shades of color with Quantum Dot

Quantum Dot technology delivers the finest picture ever. With 100% Color Volume, Quantum Dot takes light and turns it into breathtaking color that stays true at any level of brightness.

* 100% color volume measured in Movie Mode and the DCI-P3 color space, certified by VDE.



Virtual sound that tracks the action

Give guests a theater-like experience in every room with 3D surround sound leveraging our top channel audio. Combined with breathtaking visuals, guests will be immersed in every watch.



Optimized backlight color tone for enhanced contrast

Innovative backlighting technology by Dual LED delivers bolder and more accurate contrast by optimizing the backlight color tone to match the type of content being watched.



Lifelike color, in its purest state with fine crystal

Elevate your hotel's entertainment experiences with Dynamic Crystal Color. With a billion shades of color, every subtlety can be seen from the comfort of the hotel room.

* When compared to Samsung's FHD mode.



Effortless streaming without worries

Enjoy movies, shows, photos and more on the TV in your room with AirPlay or Smart View. Your devices are securely paired to the TV, ensuring peace of mind that everything stays personal and private.

* AirPlay feature is supported on HBU8000 only, as of August 2023. (To be extended to other models)

** This function may not be supported depending on the model, app, or geographical area.



An instantly familiar UI for faster navigation

Upon turning on their room TV, guests are treated to a recognizable UI filled with the most popular entertainment applications such as Netflix and YouTube. Guests can sign-in to dive back into the latest show they're bingeing or find new suggestions through their apps.

* Content service availability and user interface may vary according to product model and customer environment.

** Agreement of the Smart Hub Terms and Conditions and Privacy Policy is required before use.

* Feature is supported on LBU100 series.



Crystal UHD

HCU7000

Samsung Crystal UHD hospitality display gives your guests the feeling of home, offering clear viewing and convenient access to their favorite content for instant comfort.

Highlights

- PurColor
- Ambient Mode
- Object Tracking Sound Lite (OTS Lite)
- Samsung Q-Symphony
- Adaptive Sound
- Samsung TV Plus
- Slim Fit Wall-mount***
- 3 Bezel-less Design
- LYNK Cloud*
- TEP API**

* LYNK Cloud License must be purchased separately.
 ** TEP API is not supported in North America region only.
 *** Slim Fit Wall-mount must be purchased separately.



Samsung Display Solutions | Hospitality TV

Healthcare

HCU7030

Samsung's HCU7030 series* series fosters a comfortable, patient-friendly experience. Equipped with a pillow speaker**, it produces clear streaming audio without headphones. The displays are UL-certified for installation in a variety of spaces in a hospital or healthcare facility.

* HCU7030 series is launched in North America region only.
 ** Pillow speaker must be purchased separately.



Produce every shade of color as intended in 4K

Powerful 4K upscaling delivers superior visuals in up to 4K resolution, enhancing contrast and removing noise.

* Viewing experience may vary according to types of content and format.



Fine-tuned color for vibrant, lifelike picture

PurColor creates an immersive viewing experience by enabling the TV to display a wide range of colors for optimal picture performance.



Elevate customer satisfaction with extended adaptability

With headphone ID and multi-code remote, users can enjoy their seamless audiovisual experience, while distinguishing whether output unit is connected adequately or not, and avoiding interference from neighboring remotes or displays.

* Multi-code ID function requires extra remote controller.



Compact

HCF8000

Samsung's HCF8000 series* hospitality display creates welcoming environments to impress any guests. Visitors can enjoy signature QLED quality and user-friendly functions to help them relax in comfort. In addition, enables optimized audiovisual performance for a wide range of industries.

* HCF8000 series is launched in Europe and North America region only.

Solution

Optimize your business operations with Samsung's comprehensive display solutions. Seamlessly integrate and control multiple devices and systems to enhance operational efficiency and overall performance across various business environments.

- 38 SmartThings Pro
- 39 Samsung VXT
- 40 LYNK Cloud
- 41 H.Browser / TEP (Tizen Enterprise Platform)



* Images regarding SmartThings Pro are simulated for illustrative purposes. Actual UI may differ and is subject to change without notice.

SmartThings Pro

Samsung SmartThings now extends beyond the home, integrating into business environments. SmartThings Pro* connectivity enhances convenience, safety, and energy efficiency across various business settings, from small personal shops to large companies and hotels.

* Some features' availability of SmartThings Pro may vary by models and require additional subscription plan.

Highlights

- AI-Powered Energy Saving
- Rule-based Automation
- SmartThings Pro Dashboard
- Enterprise API
- Integrated Device Control
- 3D Map View



Streamline your store's routines

When it's time to open, SmartThings Pro automatically turns on the lights and devices in your store. At closing time, it helps each business environment is in energy-saving mode, switched off and in energy-saving mode. Throughout operating hours, the solution efficiently manages the smart signage and uses AI to support energy savings.

38



Offer guests a customized room experience

By scanning a QR code with their mobile devices*, guests can conveniently control room devices through a web dashboard during their stay. Create a hotel service that transforms the room environment from morning to night, optimizing and customizing the guest experience.

* The feature will be available after future updates.



Manage multiple meeting rooms with one dashboard

Empty meeting rooms automatically power down their devices while the system adjusts the air conditioning for optimal energy efficiency.



* Images regarding Samsung VXT are simulated for illustrative purposes. Actual UI may differ and is subject to change without notice.



Effortlessly create promotional content

VXT Canvas enables anyone to create content effortlessly and more intuitively. You can create original content with a variety of templates and free stock images, even adding widgets for more dynamic, visually engaging content. It also allows for easy touch content creation.



Remote control in real-time, every time

Samsung VXT offers an intuitive remote monitoring and robust security control features. It includes additional lock options for USB ports and wireless connections across multiple screens. VXT also detects potential issues like overheating or weak network signals, alerting users via email and SMS for ensuring stable content play.

Samsung VXT

Samsung VXT* is a cloud-based solution for digital signage, bringing intuitive content management and remote display management together in one secure platform.

* Samsung VXT must be purchased separately.

Highlights*

- Free Templates for various verticals
- Sync Play & Screen Wall
- Real-time monitoring
- Security Management
- Advanced Tag Management
- Early Warning & Energy Management
- VXT Assistant (Chatbot) & Live chat
- PIRS App (Pre-Integrated & Reconfigurable Solution)
- VXT Art
- Link my POS
- Infotainment by Seemspire
- etc.

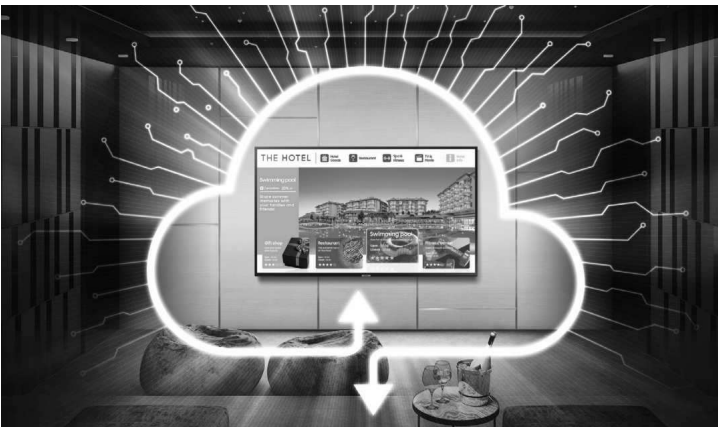
* Each feature's availability may vary by Samsung VXT's subscription plan. For more information about Samsung VXT, please visit samsung.com



Vertical-specific custom options

Samsung VXT allows users to easily discover, install, and utilize additional solutions tailored to their specific needs. With VXT PIRS App, partners can generate new business opportunities by selling their unique apps, while customers can test a solution and then deploy it to all displays by purchasing a cost-effective license.

39



LYNK Cloud

Samsung LYNK Cloud* is a comprehensive hospitality cloud solution. More than a powerful content and device management system, LYNK Cloud can analyze guests' content use to uncover marketing insights.

* LYNK Cloud license must be purchased separately.

Highlights

- Device status monitoring
- Multi-site monitoring
- Remote firmware update
- Remote device setting change
- Automatic credential removal
- Real-time message sending
- Web-standard content creation
- Custom preview support
- Interactive service support
- TV & service usage analysis
- User flow analysis



Streamlined property management

With online access that supports multiple users, Samsung LYNK Cloud is ideal for global hospitality operations with centralized management, giving users control of their hotel displays worldwide.

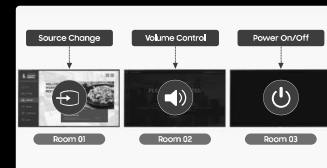
* LYNK Cloud does not support within China.



Content creation and custom interactions

Curate your hotel's in-room experience with LYNK Cloud. Create and remotely deploy web-based content to each in-room TV for a tailored feel to your property. With interactive requests support, you can provide the easiest way for guests to make room service orders and book spa appointments.

* Some features may not be compatible with hotels' current platforms.



Integrated device management

Quickly update in-room TVs from a centralized source with Samsung LYNK Cloud. Managers can modify channel maps and program guides and control basic functions, making it easier than ever to provide support and maintenance.



H.Browser

Samsung's H.Browser creates greater flexibility for content development. It provides the superior in-room entertainment and customized content management services that their guests expect. System integrators can create even smarter hospitality solutions. All apps can be stored within the Tizen OS and are supported by Web Simulator and Remote Web Inspector tools that further refine app performance and security.



TEP

(Tizen Enterprise Platform)

Samsung's Tizen Enterprise Platform (TEP) offers an integrated service infrastructure and a flexible application development environment. Within Tizen OS, applications can be easily tailored to specific business needs, while its system assures enhanced software management for operation.



Monitor

Work with a better view. Samsung monitors are designed with optimal ergonomics and usability in mind, maximizing user comfort and reducing eye strain. Experience a significant boost in work efficiency and productivity with Samsung monitors.

ViewFinity

- 44 5K Resolution Monitor
- 46 High Resolution Monitor
- 47 Ultra-wide Monitor



ViewFinity

5K Resolution Monitor
S90PC

The perfect choice for creative professionals, the ViewFinity 5K monitor delivers a bigger canvas for more creative space and greater detail reducing glare with Matte Display. Smart Calibration makes it easy to customize the screen to match color profiles with a smartphone, for consistent and clear design across devices.

Highlights

- 5K resolution
- DCI-P3 99%
- Matte Display
- Smart Calibration
- Pantone Validated
- Thunderbolt™4
- 4K SlimFit Camera
- Apple Airplay
- Ergonomic design

* Microsoft 365 requires Microsoft account.

** Google Meet requires Google account.

*** You will need a Samsung Account to access Smart Hub, our network-related smart service that includes app (e.g., streaming service app) and built-in smart features available through your device. You may need to use a separate device (e.g., your laptop) to display or make device to make it into a Samsung account. If you choose not to log in, you will only get a restricted external devices (e.g., via HDMI) and terrestrial over-the-air TV (only for "You wish" series).

More space to get more done in 5K

5K provides more pixels, which means more space for creative professionals to take advantage of. 210 PPI allows for greater detail, and the 99% DCI-P3 option delivers a deep range of colors.

* Color accuracy figures may vary based on the measuring device and the measuring point.
** Screen features may vary depending on system environment such as computer components, duration of use, or other factors.



Anti-glare that's easy on the eyes

Edit and review content clearly even in bright daylight. The Matte Display technology on the monitor is UL-certified, and enables professionals to review and edit with consistent levels of brightness and colors and decreased light distortion.

* Matte Display may vary by model.

Smartly suit colors to your needs

The ViewFinity S9 brings vivid colors to life. With Smart Calibration and a smartphone, the screen can easily be customized for unique experiences. Choose between DCI-P3 or sRGB color space, and customize color temperature, luminance and gamma settings without any extra tools or complex procedures.



* Smart Calibration is available on Galaxy S21 or later, Galaxy A040 or later, Galaxy Fold devices, Galaxy Z Fold devices, iPhone 11 or later, and the second-generation iPhone SE 2 or later.

** Requires the latest version of the SmartThings app.

* Color accuracy figures may vary based on the measuring device and the measuring point.

** Screen features may vary depending on system environment, such as computer components, duration of use, or other factors.



ViewFinity

High Resolution Monitor

S80PB / S80TB / S80UD / S80D / S60UD / S60D

The ViewFinity high resolution series provides the performance and flexibility to do it all, from high-profile professional jobs to personal creative projects. After quick and easy setup, an ergonomic design provides customizable comfort. A thoughtful design delivers full performance while reducing the impact on the environment.

Highlights

- UHD / QHD resolution
- PBP / PIP
- Intelligent Eye care
- USB Type-C & Thunderbolt™4
- Ergonomic stand



ViewFinity

Ultra-wide Monitor

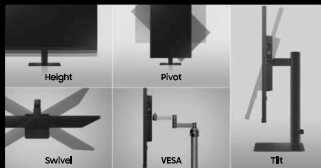
S95UC / S65UC / S65VC / S65TC

Also available in Ultra-wide models, ViewFinity monitors are a popular choice for businesses looking to maximize worker productivity through the latest technology. Samsung's Ultra-wide lineup allows professions to review and work on more documents and applications simultaneously.

Highlights

- 32:9 / 21:9 aspect ratio
- DQHD/ Ultra WQHD resolution
- PBP / PIP
- Intelligent Eye care
- USB Type-C / LAN port
- Built-in Webcam (S65VC only)
- Built-in KVM switch*
- Ergonomic stand
- Thunderbolt™4 (S65TC only)

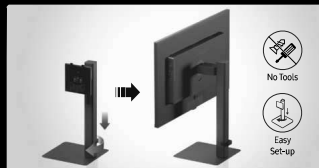
* Not supported on S65UC.



Ergonomic design

Professionals can create healthy, comfortable desk setups thanks to ergonomic solutions. The borderless design and VESA mount compatibility enable a variety of tilt, swivel and pivot control points for mounting in any environment.

* Support for each function may vary by model.



Effortless and instant setup

The Easy Setup Stand effortlessly creates an ideal workspace without any tools or screws. When it's time to change things up, simply push a button and enjoy flexible convenience.

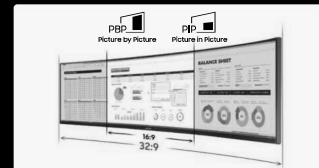
* The feature is available for S80UD, S80D, S60UD, and S60D.



Lower environmental impact

Samsung products and technologies thoughtfully designed for less impact on the environment, creating more peace of mind for our users. The ViewFinity monitors use at least 10% recycled materials*, and have earned certifications for a reduced carbon footprint.

* The percentage of recycled material is calculated based on the total weight of the plastic used on the product weight of recycled materials/total weight of product.
* Lower carbon footprint on each function may vary by model.



Display more documents at once

With picture-by-picture (PBP), view two pieces of content from separate sources simultaneously. Picture-in-picture (PIP) lets you view the input from a main source while referencing a second source in a smaller window.



USB Type-C & LAN port

The USB Type-C port lets you power your devices with up to 90W of power and transfer data with just one cable. The LAN port allows a device with no LAN port to simply connect to the monitor and use the monitor's Ethernet connection. All while keeping a clutter-free desk environment.



TUV-certified intelligent eye care

TUV-certified Intelligent eye care helps maintain your eye health by reducing blue light and screen flicker. Plus, Adaptive Picture optimizes the brightness and colors on the screen for consistent accuracy in various lighting environments.

Specifications

Smart Signage									
Model	Screen Size	Resolution	Brightness	Contrast Ratio	Operation Hour	Connectivity			Platform
GPA-8K	85"	7680 x 4320	500 nit (1,000,000 nit)	1,500:1	50,000	-In: HDMI 2.1 (x1), HDMI 2.0 (x3), USB 2.0 (x3) -Out: Stereo Mini Jack, RS232C (In/Out, RJ45) -Ext: RS232C (In/Out, RJ45)			Team 6.0

UHD Signage

Model	Screen Size	Resolution	Brightness	Contrast Ratio	Operation Hour	Connectivity	Platform	Panel type	Rating
QHC	43",55",55",65",75",98"	3,840 x 2,160	700 nit	4,000:1 (65",55",65",75",98") 5,000:1 (98")	24,720	-In: DP1.2 (x1), HDMI 2.0 (x3), USB 2.0 (x2) -Out: Stereo Mini Jack -Ext: RS232C (In/Out, RJ45)	Team 7.0	Non-glass	IP5X
QMC	43",55",55",65",75",98"	3,840 x 2,160	800 nit	4,000:1 (200,1163, 500") 4,000:1 (65", 65", 65", 75", 98") 5,000:1 (98") 1,000 nit (only for the 98 inch model)	24,720	-In: DP1.2 (x1), HDMI 2.0 (x3), USB 2.0 (x2) -Out: Stereo Mini Jack -Ext: RS232C (In/Out, RJ45)	Team 7.0	Non-glass	IP5X
QBC	43",55",55",65",75",98"	3,840 x 2,160	350 nit	4,000:1	16,720	-In: HDMI 2.0 (x3), USB 2.0 (x2) -Out: Stereo Mini Jack -Ext: RS232C (In/Out, RJ45)	Team 7.0	-	IP5X
QEC	98"	3,840 x 2,160	450 nit	5,000:1	16,720	-In: HDMI 2.0 (x3), USB 2.0 (x2) -Ext: RS232C (In/Out, RJ45)	Team 6.5	-	-
GET	43",55",55",65",75",98"	3,840 x 2,160	300 nit	1,300:1 (65", 70") 4,000:1 (65", 65", 55", 98")	16,720	-In: HDMI 2.0 (x3), USB 2.0 (x2) -Out: Stereo Mini Jack -Ext: RS232C (In/Out, RJ45)	Team 4.0	-	IP5X

Video Wall

Model	Screen Size	Resolution	Brightness	Contrast Ratio	Operation Hour	Connectivity	S-to-B	Bezel width
VHC-R/VMC-R	55"	1920 x 1080	700 nit (1,000,000 nit) 500 nit (1,000,000 nit)	1,000:1	24,720	-In: DP1.2 (x1), DP1.2 (x1), DP1.2 (x1), Stereo Mini Jack, USB only (w/ upgrade) -Out: DP1.2 (x1), Stereo Mini Jack -Ext: RS232C (In/Out, RJ45)	0.88 mm	0.64 mm (bezel)
VHC-E/VMC-E	55"	1920 x 1080	700 nit (1,000,000 nit) 500 nit (1,000,000 nit)	1,000:1	24,720	-In: DP1.2 (x1), DP1.2 (x1), DP1.2 (x1), Stereo Mini Jack, USB only (w/ upgrade) -Out: DP1.2 (x1), Stereo Mini Jack -Ext: RS232C (In/Out, RJ45)	12mm (Bezel Bezel for Panel Bezel) 2.6mm (Active area bezel area)	1.3 mm (U/L) 0.4 mm (U/B)
VMB-U	40",35"	1920 x 1080	800 nit	1,000:1	24,720	-In: DP1.2 (x1), DP1.2 (x1), DP1.2 (x1), Stereo Mini Jack, USB only (w/ upgrade) -Out: DP1.2 (x1), Stereo Mini Jack -Ext: RS232C (In/Out, RJ45)	3.5 mm	2.25 mm (U/L) 1.25 mm (U/B)

Smart Signage									
Outdoor Signage									
Model	Screen Size	Resolution	Brightness	Contrast Ratio	Operation Hour	Connectivity		Platform	Rating
CHA/CHA-S	55" (CHAS) 75" (CHAS)	1920 x 1080 (55") 3,840 x 2,160 (75")	3500 nit (peak 4000 nit)	6,000:1 (55") 1,200:1 (75")	24,720	-In: DP1.2 (x1), HDMI 2.0 (x3), USB 2.0 (x3) -Out: Stereo Mini Jack -Ext: RS-422/RS-485 (In/Out, RJ45), RS-485 (In/Out, RJ45)		Team 4.0 (CHAS) Team 5.0 (CHAS)	IP56
CHB/CHB-S	24" (CHB) 46" (CHBS)	1920 x 1080	1500 nit (24") 3500 nit (46", 75")	1,000:1 (24") 6,000:1 (46", 75")	24,720	-In: DP1.2 (x1), HDMI 2.0 (x3), USB 2.0 (x3) -Out: Stereo Mini Jack -Ext: RS-422/RS-485 (In/Out, RJ45), RS-485 (In/Out, RJ45)		Team 5.0 (CHB) Team 6.0 (CHBS, CHBS)	IP56 (24") IP66 (46")

Window Signage

Model	Screen Size	Resolution	Brightness	Contrast Ratio	Operation Hour	Connectivity			Platform	Rating
OMA	75"	3,840 x 2,160	4,000 nit (two glass)	1,200:1	24,720	-In: DP1.2 (x1), HDMI 2.0 (x3), USB 2.0 (x3) -Out: Stereo Mini Jack -Ext: RS232C (In/Out, RJ45), RS485 (In/Out, RJ45)			Team 5.0	IP5X
OMB	40",55"	1920 x 1080 (40") 3,840 x 2,160 (55")	4,000 nit (40") 3,000 nit (55")	6,000:1 (40") 1,200:1 (55")	24,720	-In: HDMI 2.0 (x3), USB 2.0 (x3) -Out: Stereo Mini Jack -Ext: RS232C (In/Out, RJ45), RS485 (In/Out, RJ45)			Team 5.0	IP5X
OMN-S/OMN-DS	55"	1920 x 1080	4,000 nit (40") 3,000 nit (55")	6,000:1	24,720	-In: DP1.2 (x1), HDMI 2.0 (x3), USB 2.0 (x3) -Out: Stereo Mini Jack -Ext: RS232C (In/Out, RJ45), RS485 (In/Out, RJ45)			Team 5.0	IP5X

Samsung Flip & Flip Pro

Model	Screen Size	Resolution	Brightness	Contrast Ratio	# of touch	Connectivity	Touch pen type	Touch type	Object recognition range
WMR	55", 65", 85"	3,840 x 2,160	350 nit (two glass)	6,000:1 (two glass)	10 Multi-touch (8 drawing)	-In: HDMI (two 2, front) -USB 2.0 (for SC, Rear), Front, (USB 3.0 for External, Front) -Out: HDMI (out), Rear, out 2 (USB 3.0 optional), Rear, (L, Rear), Stereo Mini Jack -Ext: RS232C (two stereo jack, RJ45) (for MDC) -BT (W4): Keyboard, Mouse -W4: (optional) (only for W4)	Passive pen	BI (Bio-Rec)	2 mm (4 mm) (8 mm) (50 mm, 100 mm) (or Brush Mode)
WMA	75", 98"	3,840 x 2,160	300 nit (two glass)	6,000:1 (two glass)	10 Multi-touch (8 drawing)	-In: HDMI (two 1, front), DP1.2, DP1.2, DP1.2 -USB 2.0 (for SC, Rear), Front, (USB 3.0 for External, Front) -Out: HDMI (out), Rear, out 2 (USB 3.0 optional), Rear, (L, Rear), Stereo Mini Jack -Ext: RS232C (two stereo jack, RJ45) (for MDC) -BT (W4): Keyboard, Mouse -W4: (optional) (only for W4)	Passive pen	BI (Bio-Rec)	2 mm (4 mm) (8 mm) (50 mm, 200 mm) (or Brush Mode)
WMB	55", 65", 75", 85"	3,840 x 2,160	350 nit (two glass)	6,000:1 (two glass)	20 Multi-touch (8 drawing)	-In: HDMI (two 2, front), DP1.2, DP1.2, DP1.2, DP1.2 -USB 2.0 (for SC, Rear), Front, (USB 3.0 for External, Front) -Out: HDMI (out), Rear, out 2 (USB 3.0 optional), Rear, (L, Rear), Stereo Mini Jack -Ext: RS232C (two stereo jack, RJ45) (for MDC) -BT (W4): Keyboard, Mouse, Speaker -W4: (optional) (only for W4)	Passive pen	BI (Bio-Rec)	2 mm (4 mm) (8 mm) (50 mm, 200 mm) (or Brush Mode)

Specifications

Smart Signage

Interactive Display

Model	Screen Size	Resolution	Brightness	Contrast Ratio	# of touch	Connectivity	Touch pen type	Touch type	Object recognition range
WAC	65" 75" 86"	3,840 x 2,160	400 nit	1,200:1	40 Multi-Touch (50 drawing)	- In: HDMI (HDMI 2.0 Front), VGA (L, R), USB-C (Type-C), USB 3.1 (Type-A) (Front), FireWire (Type-C) (Front) - Out: HDMI out (1), Touch out 2 (USB upstream type, Front, L, Right), Stereo Mini Jack - Ext: RS232C (9-pin stereo jack, RJ45) - Ext: Wi-Fi, Keyboard, Mouse, Speaker	Passive pen	BI (Infrared)	5 mm/10 mm/15 mm
WAD	65" 75" 86"	3,840 x 2,160	400 nit	1,200:1	40 Multi-Touch (50 drawing)	- In: HDMI (HDMI 2.0 Front), VGA (L, R), USB-C (Front), USB 3.1 (Type-A) (Front), FireWire (Type-C) (Front), FireWire (Type-C) (Front) - Out: HDMI out (1), Touch out 2 (USB upstream type, Front, L, Right), Stereo Mini Jack - Ext: RS232C (9-pin stereo jack, RJ45) - Ext: Wi-Fi, Keyboard, Mouse, Speaker	Passive pen	BI (Infrared)	5 mm/10 mm/15 mm

Business TV

Model	Screen Size	Resolution	Brightness	Operation Hour	Connectivity	Platform
BED-H	43" 55" 55" 65" 70" 75" 85"	3,840 x 2,160	500 nit	1w/7	- In: HDMI (4x), USB (1), RS (1) - Out: RJ45 *Connectivity information may vary by the product's use scenario.	Team 8.0

Self-Ordering Kiosk

Model	Screen Size	Resolution	Brightness	Contrast Ratio	Operation Hour	Connectivity	Platform	Touch type
KMA	24"	1,920 x 1,080	250 nit (w/o glass)	1,000:1 (w/o glass)	16/7	- In: HDMI (4x), RS (3), RJ45 (1) - Out: Touch out 4, RJ45 (1) - Ext: RS232C (1)	Team 4.0	Capacitive
KMC-W	24"	1,920 x 1,080	250 nit (w/o glass)	1,000:1 (w/o glass)	16/7	- In: RS (1), RJ45 (1) - Ext: RS232C (1)	Windows 10 IoT Enterprise	Capacitive

Touch Display

Model	Screen Size	Resolution	Brightness	Contrast Ratio	Operation Hour	Connectivity	Platform	Touch type
QMB-T	43" 55"	3,840 x 2,160	500 nit (w/o glass)	4,000:1 (w/o glass)	24/7	- In: DP 1.2 (1), HDMI 2.0 (2), USB (2) - Out: Stereo Mini Jack, Touch out 1 - Ext: RS232C (1), RJ45 (1)	Team 6.5	Capacitive

Smart Signage

Small Signage

Model	Screen Size	Resolution	Brightness	Contrast Ratio	Operation Hour	Connectivity	Platform	Panel Type (w/o glass)
GB13R-V/GB13R-TM	13"	1,920 x 1,080	500 nit (0.0131x44) 800 nit (0.0131x44 w/o glass)	800:1 (800/5246) 600:1 (2019/47 w/o glass)	16/7	- In: HDMI (4x), USB (2) - Out: Stereo Mini Jack, RS (3), RJ45 (1) - Ext: RS232C (1), RJ45	Team 4.0	None-glass
QB24C/QB24C-T	34"	1,920 x 1,080	250 nit (55/46C) 250 nit (0.046C w/o glass)	1,000:1 (0.020C) 1,000:1 (0.046C w/o glass)	16/7	- In: HDMI (4x), RS (2) - Out: Stereo Mini Jack, RS (3), RJ45 (1) - Ext: RS232C (1), RJ45	Team 8.0	None-glass
QM32C	32"	1,920 x 1,080	400 nit	4,000:1 (0.0131x44 w/o glass) (0.0131x44 w/o glass) (0.0131x44 w/o glass)	24/7	- In: HDMI (2x), USB (2) - Out: Stereo Mini Jack - Ext: RS232C (1), RJ45	Team 3.0	-

Stretched Signage

Model	Screen Size	Resolution	Brightness	Contrast Ratio	Operation Hour	Connectivity	Platform	Panel type
SHC	57"	1,920 x 1,540	700 nit	4,000:1	24/7	- In: HDMI (4x) - Out: Stereo Mini Jack - Ext: RS232C (1), RJ45 (1)	Team 3.0	None-glass

LED Signage

The Wall

Model	Pixel Pitch	Diode Type	Brightness (peak)*	Contrast Ratio	Certification	Cabinet size (L x H x D, per cabinet)	Weight (per cabinet)	Service**	IP Rating
IMA	P0.8, P1.2, P1.6	RGB=chip RGB LED	1,600 nit (P0.8, P1.2) 1,400 nit (P1.6)	16,000:1 (P0.8, P1.2) 22,000:1 (P1.6)	EMC Class B ULM Eye Comfort Safety: CE, FCC, RoHS, REACH	806.4 x 453.6 x 36.5 mm	12.9kg (P0.8) 11.7kg (P1.2, P1.6)	Front	IP10
IMB	P0.8, P0.9	RGB=chip RGB LED	1,800 nit (P0.8) 1,200 nit (P0.9)	16,000:1 (P0.8) 12,000:1 (P0.9)	EMC Class B ULM Eye Comfort Safety: CE, FCC, RoHS, REACH	1,006.6 x 680.4 x 39.9 mm	21.9kg (P0.8) 22.8kg (P0.9)	Front	IP10
IWC	P0.8, P1.2, P1.6	RGB=chip RGB LED	1,200 nit (P0.8) 1,000 nit (P1.2) 1,000 nit (P1.6)	12,000:1 (P0.8) 24,000:1 (P1.2) 22,000:1 (P1.6)	EMC Class B ULM Eye Comfort Safety: CE, FCC, RoHS, REACH	806.4 x 453.6 x 37.5 mm	11.4kg	Front	IP10

* Peak value according to IEC 61345 (Information Display Measurement Standards)
** Front service: Front service for power supply and main board are selected level.

Specifications

LED Signage

The Wall for virtual production

Model	Pixel pitch	Diode Type	Brightness (peak)*	Contrast Ratio	Certification	Cabinet size (L x H x D, per cabinet)	Weight (per cabinet)	Service**	IP Rating
IVC	P16,P32	Flip-chip RGB LED	1500 nit	31,000:1 (P16) 35,000:1 (P32)	EMC Class A Safety GS36841, 60950-4	9033 x 1070 x 63 mm	13.3kg	Front (Modular/Panel) Rear (Scan/SMP/S)	IP20

All-in-One LED

Model	Pixel pitch	Diode Type	Brightness (peak)*	Contrast Ratio	Certification	Cabinet size (L x H x D, per screen)	Weight (per screen)	Service**	IP Rating
IAB 146" 4K	P0.8	Flip-chip RGB LED	1,600 nit	24,000:1	EMC Class A TV/Eye Comfort Safety GS36841, 60950-4	3,295 x 1,880 x 491 mm	160kg	Front	IP20
IAB 146" 2K	P1.6	Flip-chip RGB LED	1,400 nit	22,000:1				Front	IP20
IAB 110" 2K	P1.2	Flip-chip RGB LED	1,600 nit	24,000:1		2,631 x 1,564 x 491 mm	99kg	Front	IP20
IAC	P0.5	Surface Mount Device (SMD)	1,000 nit	6,000:1	EMC Class A TV/Eye Comfort Safety GS36841, 60950-4	2,888.5 x 1,628.5 x 56.2 mm	125kg	Front	IP20

Indoor LED Signage

Model	Pixel pitch	Diode Type	Brightness (peak)*	Contrast Ratio	Certification	Cabinet size (L x H x D, per cabinet)	Weight (per cabinet)	Service**	IP Rating
IFR/IFR-F	P1.5, P2.0, P2.5, P4.0	Surface Mount Device (SMD)	1,600 nit (P1.5, P2.0) 2,100 nit (P2.5) 1,100 nit (P4.0)	31,000:1 (P1.5) 22,000:1 (P2.0) 8,000:1 (P2.5) 8,500:1 (P4.0)	EMC Class A Safety GS36841, 60950-4	960 x 540 x 76.5 mm (IFR) 240 x 940 x 81 mm (IFR-F)	11.8 kg (IFR-P1.5) 17.4 kg (IFR-P2.0, P2.5, P4.0) 3.2 kg (IFR-F)	Front	IP20
IFR-V/IFR-VF	P1.5, P2.0, P2.5, P4.0	Surface Mount Device (SMD)	1,600 nit (P1.5, P2.0) 2,100 nit (P2.5) 1,100 nit (P4.0)	31,000:1 (P1.5) 22,000:1 (P2.0) 8,000:1 (P2.5) 8,500:1 (P4.0)	EMC Class A Safety GS36841, 60950-4	960 x 540 x 76.5 mm (IFR-V) 240 x 940 x 81 mm (IFR-VF)	11.8 kg (IFR-P1.5) 17.4 kg (IFR-P2.0, P2.5, P4.0) 3.2 kg (IFR-F)	Front	IP20
IEA/IEA-F	P1.5, P2.0, P2.5, P4.0	Surface Mount Device (SMD)	1,000 nit (P1.5, P2.0, P2.5) 800 nit (P4.0)	6,000:1 (P1.5) 3,000:1 (P2.0) 3,000:1 (P2.5, P4.0)	EMC Class A Safety GS36841, 60950-4	960 x 540 x 76.5 mm (IEA) 240 x 940 x 81 mm (IEA-F)	11.8 kg (IEA-P1.5) 17.4 kg (IEA-P2.0) 10.8 kg (IEA-P2.5, P4.0) 3.2 kg (IEA-F)	Front	IP20

* Peak value according to DIN 5033 Information Display Measurement Standard.
** Front service: Front service to power supply, and rear board on a cabinet level.

LED Signage

Outdoor LED Signage

Model	Pixel pitch	Diode Type	Brightness (peak)*	Contrast Ratio	Certification	Cabinet size (L x H x D, per cabinet)	Weight (per cabinet)	Service**	IP Rating
XHB-S	P6, P6L, P10, P16	SMD (P6, P6L, P10) Discrete lamps (P16)	8,000 nit (P6, P6L, P10, P16) 10,000 nit (P10)	8,000:1 (P6, P6L, P10, P16) 10,000:1 (P10)	CE, UL, /ULC listed	6899 x 1,286.4 x 91.5 mm (P6) 6899 x 1,285.4 x 92.0 mm (P6L) 6899 x 1,285.4 x 92.9 mm (P10) 6899 x 1,285.4 x 100.9 mm (P16)	23.7kg (P6, P6L, P10) 27.4kg (P16)	Front and rear	Front (P6L / Rear P16)
XHB-E	P6, P6L, P10, P16	SMD (P6, P6L, P10) Discrete lamps (P16)	7000 nit	7000:1	CE, UL, /ULC listed	6899 x 1,286.4 x 91.5 mm (P6) 6899 x 1,285.4 x 92.0 mm (P6L) 6899 x 1,285.4 x 92.9 mm (P10) 6899 x 1,285.4 x 100.9 mm (P16)	23.7kg (P6, P6L, P10) 27.4kg (P16)	Front and rear	Front (P6L / Rear P16)

* Peak value according to DIN 5033 Information Display Measurement Standard.
** Front service: Front service to power supply, and rear board on a cabinet level.

Hospitality TV

QLED

Model	Screen Size	Resolution	Features	Connectivity
HQ60A	43", 50", 55", 65", 75"	1,920 x 1,080	QLED, 9K, 100% Color Volume with Quantum Dot, Quantum Processor Lite 4K, Quantum HDR, Dual LED, VRR and GTS, Odyssephony Lite, Adjustable Mount, Samsung TV Plus, PC on TV, Ambient Mode, LAN out Ethernet port, Bottom Speaker, LYNK Cloud, AI Barware	Wi-Fi 5 Bluetooth 3 x HDMI 3 x USB

Crystal UHD

Model	Screen Size	Resolution	Features	Connectivity
HAUB000	43", 50", 55", 65", 75"	1,920 x 1,080	Dynamic Crystal Color, Crystal Processor 4K+, OD90+, Odyssephony Lite, Studio Slim, Samsung TV Plus, PC on TV, Ambient Mode, LAN out Ethernet port, Bottom Speaker, LYNK Cloud, AI Barware	Wi-Fi 5 Bluetooth 3 x HDMI 2 x USB
HBUB000	43", 50", 55", 65", 75"	1,920 x 1,080	Dynamic Crystal Color, Quantum Processor Lite 4K, Contrast Enhancer, HDR10+, Object Tracking Sound Lite (OTS Lite), Odyssephony Lite, Adaptive Sound, AirSim, Samsung TV Plus, PC on TV, Ambient Mode, LYNK Cloud, TSP, Netflix, AirPlay	Wi-Fi 5 Bluetooth 3 x HDMI 2 x USB
HCU7000	43", 50", 55", 65", 75"	1,920 x 1,080	PurColor 4K+, HDR10+ Support, Odyssephony Lite, 3-Doorless Slimless Design, Samsung TV Plus, Workspace, Ambient Mode, Headphone EQ, LYNK Cloud, TSP	Wi-Fi 5 Bluetooth 3 x HDMI 2 x USB

* Peak value according to DIN 5033 Information Display Measurement Standard.
** Front service: Front service to power supply, and rear board on a cabinet level.

Specifications

Hospitality TV

Healthcare

Model	Screen Size	Resolution	Features	Connectivity
HCU7030	43", 50", 55", 65", 75"	1360 x 768	PuColor, 4K+, HDR10+ Support, Odysseplay, Up to 5 Simultaneous Slim Design, Slim Fit Wall-mount, Samsung TV Plus, Webosair, Ambient Mode, Fibow Sound, UTM Cloud, T-IP	Wi-Fi 5 Bluetooth 3 x HDMI 2 x USB

Compact

Model	Screen Size	Resolution	Features	Connectivity
HCF8000	32"	1360 x 1080	100% Color Volume with Quantum Dot, HDR, Odysseplay, Slim Design, Samsung TV Plus, Workspace, Ambient Mode, Fibow Speaker, Headphones, UTM Cloud, T-IP	Wi-Fi 5 Bluetooth 3 x HDMI 2 x USB

Monitor

ViewFinity 5K Resolution Monitor

Model	Screen Size	Flat/Curved	Aspect Ratio	Resolution	Brightness (Typ.)	Contrast Ratio	Connectivity
S90PC	27"	Flat	16:9	5120 x 2880	600 cd/m²	1000:1	1 x USB-C (DP), 1 x HDMI 2.1 (2), 2 x USB 3.0 (4 port)

ViewFinity High Resolution Monitor

Model	Screen Size	Flat/Curved	Aspect Ratio	Resolution	Brightness (Typ.)	Contrast Ratio	Connectivity
S80PB	27", 32"	Flat	16:9	3840 x 2160	350 cd/m²	1000:1	1 x USB-C (DP), 1 x HDMI 2.1 (2), 1 x DP 1.4, 3 x USB 3.0 (4 port), Headphone
S80TB	27"	Flat	16:9	3840 x 2160	350 cd/m²	1000:1	2 x USB-C (DP), 1 x HDMI 2.1 (2), 3 x USB 3.0 (4 port), Headphone
S80UD	27", 32"	Flat	16:9	3840 x 2160	350 cd/m²	1000:1 (27") 5000:1 (32")	1 x USB-C (DP), 1 x HDMI 2.1 (2), 1 x DP 1.2, 3 x USB 3.0 (4 port), Headphone
S80D	27", 32"	Flat	16:9	3840 x 2160	350 cd/m²	1000:1 (DP) 1000:1 (32")	1 x USB-C (DP), 1 x HDMI 2.1 (2), 1 x DP 1.2, 3 x USB 3.0 (4 port), Headphone
S60UD	27", 27", 32"	Flat	16:9	3840 x 2160	350 cd/m²	1000:1	1 x USB-C (DP), 1 x HDMI 2.1 (2), 1 x DP 1.4, 3 x USB 3.0 (4 port), Headphone
S60D	27", 27", 32"	Flat	16:9	2560 x 1440	350 cd/m²	1000:1	1 x USB-C (DP), 1 x HDMI 2.1 (2), 1 x DP 1.4, 3 x USB 3.0 (4 port), Headphone

Monitor

ViewFinity Ultra-wide Monitor

Model	Screen Size	Flat/Curved	Aspect Ratio	Resolution	Brightness (Typ.)	Contrast Ratio	Connectivity
S95UC	49"	Curved (1,000R)	32:9	5120 x 1440	350 cd/m²	1000:1	1 x USB-C (DP), 2 x HDMI 2.1 (2), 1 x DP 1.4, 3 x USB 3.0 (4 port), Headphone
S65UC	34"	Curved (1,000R)	21:9	3440 x 1440	350 cd/m²	1000:1	1 x USB-C (DP), 1 x HDMI 2.1 (2), DP 1.2, 3 x USB 3.0 (4 port), Headphone
S65VC	34"	Curved (1,000R)	21:9	3440 x 1440	350 cd/m²	1000:1	1 x USB-C (DP), 1 x HDMI 2.1 (2), DP 1.2, 2 x USB 3.0 (4 port), Headphone
S65TC	34"	Curved (1,000R)	21:9	3440 x 1440	350 cd/m²	1000:1	2 x USB-C (DP), DP 1.2, 1 x HDMI 2.1 (2), DP 1.2, 3 x USB 3.0 (4 port), Headphone